


crypto vision




Australia Centerlink (CSIC) Project

Marco Smeja, cv cryptovision

CTST 2009

Who is Centrelink?

Centrelink




- Australian Government Statutory Agency
- assisting people to become self-sufficient and supporting those in need
- reports to the ministry for Human Services
- Founded in 1997
- 29,000 employees

crypto vision

PAGE 2

Who am I?

Marco Smeja, cv cryptovision



- director at cv cryptovision
- focus on Identity Management and PKI
- former Novell employee
- involved in the Centrelink CSIC project
- cv cryptovision: German company specialised on crypto, Smartcards and PKI

crypto vision

PAGE 3

Agenda



1. The challenge
2. The solution
3. Lessons learned

Centrelink IT

Centrelink IT infrastructure



Centrelink ...

- operates one of the largest transaction databases in Australia
- uses Novell eDirectory & IDM as primary directory and identity management solution
- has 29,000 users
- operates 42,000 workstations
- has high security requirements

CSIC

Centrelink Staff Identification Card (CSIC)



- 29,000 employees need physical access
- 29,000 employees and 42,000 workstations need access to IT infrastructure
- using passwords was not considered secure enough
- Centrelink decided to set up a company card
- Card Management System (CMS) was provided by ActivIdentity

The Centrelink Staff Identification Card (CSIC) was born

CSIC

CSIC applications

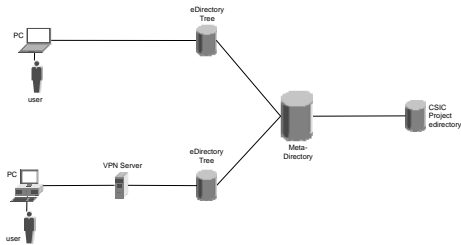


Applications

- Smart-card-protected Windows login
- Smart-card-protected PC login with Novell Client
- Smart-card-protected VPN login

A PKI became necessary

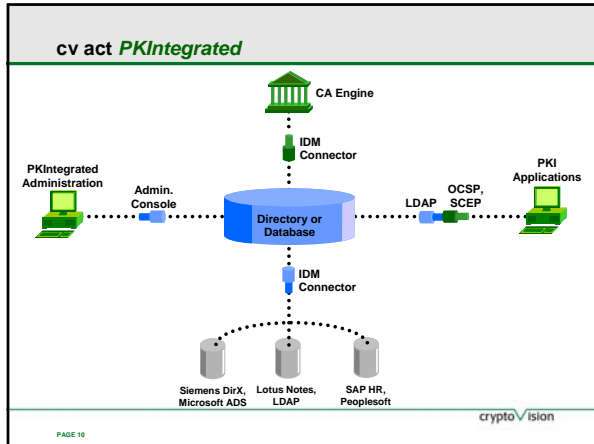
CSIC architecture without PKI and CMS

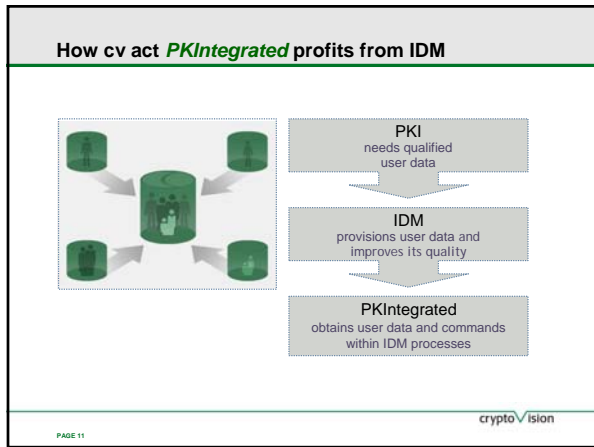


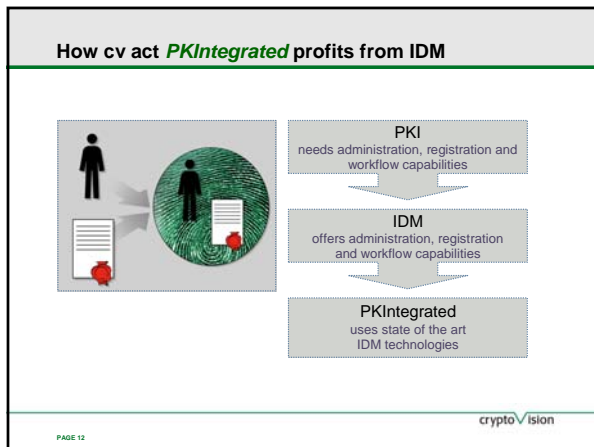
Agenda



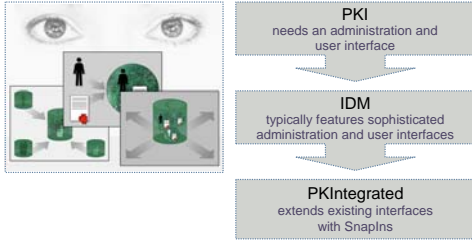
1. The challenge
2. **The solution**
3. Lessons learned



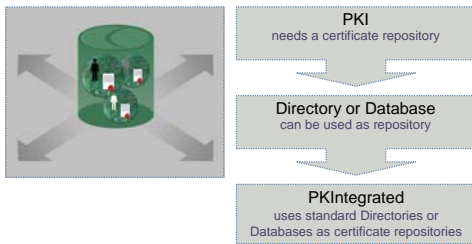




How cv act *PKIntegrated* profits from IDM



How cv act *PKIntegrated* profits from IDM



Integrated PKI solution



Company Profile
SEITE 22 2009

cryptoV ision

Agenda

1. The challenge
2. The solution
3. **Lessons learned**

PAGE 23

cryptoV ision


Conclusions

- Budget for PKI is usually low
- Integrated PKI is ideal solution
- PKI should be a feature of the identity management
- Centrelink is a typical example for a large-scale PKI project

PAGE 24

cryptoV ision

cryptoVISION



More information is available on www.cryptovision.com

© cv cryptovision GmbH 2009
